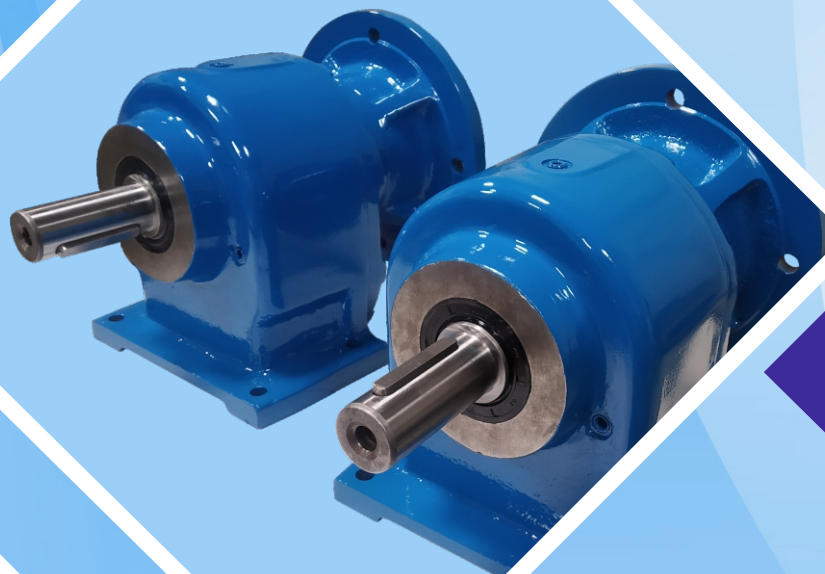




ISO 9001-2015 Certified Company



Helical Gearbox / Helical Bevel Gearbox

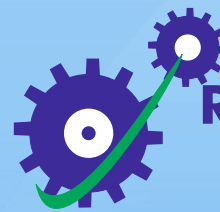
www.rototransindia.com

ROTOTRANS INDIA PVT. LTD.

(Formerly known as Captivtrade Pvt. Ltd.)

B-104, 2nd Cross, 1st Stage, Peenya Industrial Estate, Bengaluru - 560 058. India

Tel : +91 80 28392256 www.rototransindia.com



ROTO-TRANS

Positive drive

ISO 9001-2015 Certified Company

Helical Gearbox / Helical Bevel Gearbox

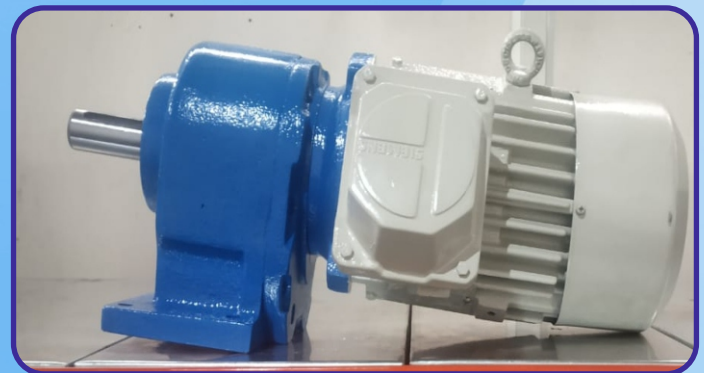
Helical Gearbox / Helical Bevel Gearbox

'Rototrans' a versatile company known for design & manufacture of mechanical power transmission is proud to announce light duty series Inline Helical Gearbox, Helical Bevel Gearbox for variety of Industrial application.

Flawless design, Good manufacturing method, Load testing with powder dynamometer makes these Gear reducers performs well in the end user machines.

RTIPL Gearboxes are,

- Compact in Design
- Lower energy consumptions
- High torque transmission
- Competitive pricing
- Quick delivery
- IEC flange
- Factory fluid lubrication
- IP compliance



Features/Benefits

IEC flange/Integral Gear motor.

1. Multiple Input options
 - C-face adaptors for mounting of IEC and NEMA motors.
 - Integral Gear motors.
2. All the Gearboxes are factory filled with VG-320 Best oil.
3. Reducer Housings are constructed of FG-250 Gray Iron casting with fine killed state.
4. Spring loaded double lip seals of Nitrite rubber (NBR) material. Oil leakage is absolutely eliminated.
5. High carbon steels shafts in Metric or Inch diameters.
6. Gearing is of Helical design & Ground to provide ellipsoid tooth which eliminates tooth wearing & assures meshing in the strongest tooth area.
 - Gear materials are Alloy steel.
 - Gears are case hardened & Ground to DIN6 class of accuracy.
 - 20 Degree pressure angle to minimize noise.
 - 95% efficiency per stage of Gearing.

Rototrans RTG Inline Helical Gear reducers are available as per the below mentioned sizes.

Ratings:

Ratio:- 10.5:1, 15:1, 20:1, 30:1, 40:1, 50:1, 80:1, 120:1

Torque:- 12 N-m to 1450 N-m

Input power:- 0.18 kW to 3.0 kW

Input options:- IEC motor frame 63-112

Output options:- Metric or Inch diameters BS or B14 flange

Housing configuration:- Foot mounted/ flange mounted

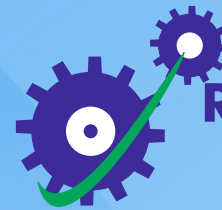


ROTOTRANS INDIA PVT. LTD.

(Formerly known as Captivtrade Pvt. Ltd.)

B-104, 2nd Cross, 1st Stage, Peenya Industrial Estate, Bengaluru - 560 058. India

Tel : +91 80 28392256 www.rototransindia.com



ROTO-TRANS

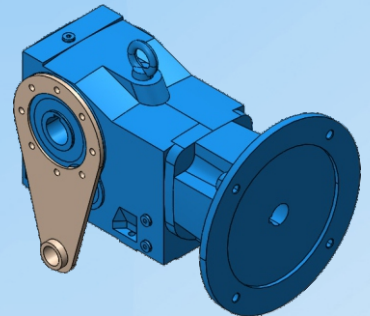
Positive drive

ISO 9001-2015 Certified Company

Rototrans RTGH Bevel Helical Geared motors.

Features/ Benefits

1. Multiple input options.
 - **C-face adaptors for mounting of IEC and NEMA motors.**
 - **Integral Gear motors.**
2. All Gearboxes are factory filled with VG-320 best oil.
3. Reducer Housing are constructed of FG-250 castings with fine killed state.
4. Spring loaded double lip seals of Nitrite rubber (NBR) material. Oil leakage is absolutely eliminated.
5. High carbon steels shafts in Metric or Inch diameters.
6. Multiple output options.
 - **Single or double O/P Shafts**
 - **Straight Hollow bore**
 - **Tapered Hollow bore**
 - **Shrink Disc**
7. Gearing is of single helical design and Ground to provide ellipsoid tooth which eliminates tooth wearing & assures meshing in the strongest tooth area. RTGH reducers also utilize Spiral Bevel Gearing.
 - **Gear material is alloy steel**
 - **Helical Gears are case hardened and Ground to DIN6 class. Bevel Gears are hardened & lapped.**
 - **20 Degree pressure angle to minimize noise**
 - **92% efficiency**



RTGH Bevel Helical Gearboxes are available as per the below mentioned sizes.

Ratings:

Ratio: - 1:15 ~ 1:150

Torque: - 45 N-m to 2200 N-m

Input power: - 0.75 kW – 5.5 kW

Input options: - IEC motor frame 80 ~ 132

Output options: - Single & Double output shaft – Metric or Inch diameters.

Straight Hollow bore: - Metric or Inch diameters.

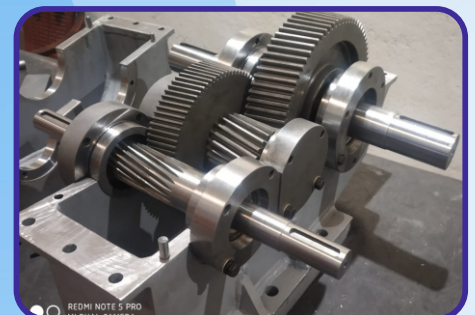
Twin tapered Bushing: - Metric or Inch diameters.

Standard or short shaft bearings

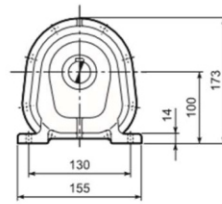
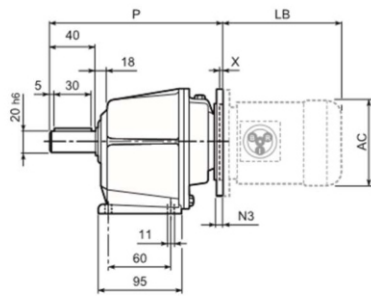
Shrink Disk: - Metric diameters

Flange: - B5 or B14 flange

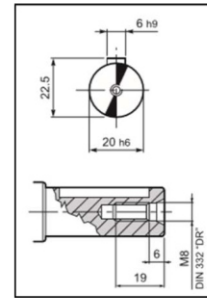
Housing mounted: - Foot mounted /flange mounted



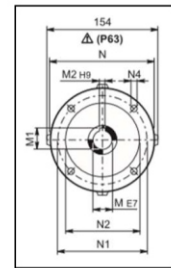
RIG 20.. IEC Version



OUTPUT

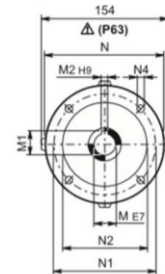
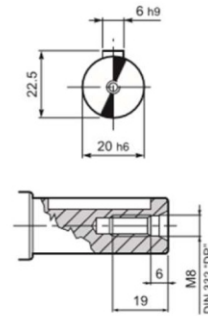
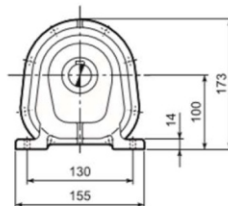
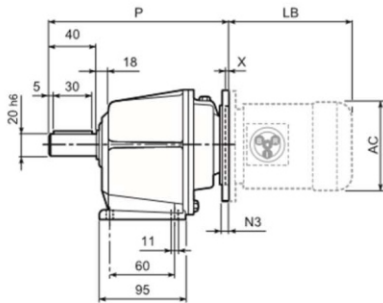


INPUT



MODEL	M	M1	M2	N	N1	N2	N3	N4	X	...P	...F	...R	Weight In Kg	Motor Frame	LB	AC	LB	AC
RIG 20_063	11	12.8	4	140	115	95	-	M8x19	5	195	195	-	12	63	184	121	249	121
RIG 20_071	14	16.3	5	160	130	110	-	M8x16	5	195	195	-	12	71	219	138	280	138
RIG 20_080	19	21.8	6	200	165	130	-	M10x12	5	200	200	-	12	80	234	156	306	156
RIG 20_090	24	27.3	8	200	165	130	-	M10x12	5	200	200	-	12	90	276	176	359	176

RIG 20.. IEC Version



MODEL	I	n1= 2800 min-1					n1=1400 min-1				
		n2 Min-1	Mn2 Nm	Pn1 kW	Rn1 N	Rn2 N	n2 Min-1	Mn2 Nm	Pn1 kW	Rn1 N	Rn2 N
RIG 20	5.49	510	50	2.8	600	730	255	60	1.7	600	950
RIG 20	6.46	433	50	2.4	600	800	217	60	1.4	600	1040
RIG 20	7.75	361	50	2	600	890	181	60	1.2	600	1150
RIG 20	8.57	327	50	1.8	600	940	163	60	1.1	600	1210
RIG 20	9.92	282	55	1.7	600	940	141	65	1	600	1220
RIG 20	11.67	240	55	1.5	600	1030	120	65	0.86	600	1340
RIG 20	14	200	55	1.2	600	1140	100	65	0.72	600	1470
RIG 20	14.96	187	100	1.96	600	1200	94	100	0.98	600	1540
RIG 20	18.01	155	80	1.4	600	1040	78	80	0.68	600	1490
RIG 20	21.19	132	80	1.2	600	1150	66	80	0.58	600	1620
RIG 20	25.43	110	80	0.97	600	1280	55	80	0.48	600	1780
RIG 20	28.13	100	80	0.88	600	1350	50	80	0.44	600	1880
RIG 20	31.71	88	80	0.78	600	1390	44	80	0.39	600	1940
RIG 20	37.31	75	80	0.66	600	1530	38	80	0.33	600	2100
RIG 20	44.77	63	80	0.55	600	1680	31	80	0.28	600	2290
RIG 20	49.52	57	80	0.5	600	1770	28.3	80	0.25	600	2400

Reach us @

ROTOTRANS INDIA Pvt. Ltd.

An ISO 9001-2015 Certified Company

CIN No : U74999KA2017PTC108184

B-104, 2nd Cross, 1st Stage,

Peenya Industrial Area, Bangalore -560058

Tel: +91 80 28392256/9663570395/9845476452

Email: harish@rototransindia.com/guru@rototransindia.co

www.rototransindia.com